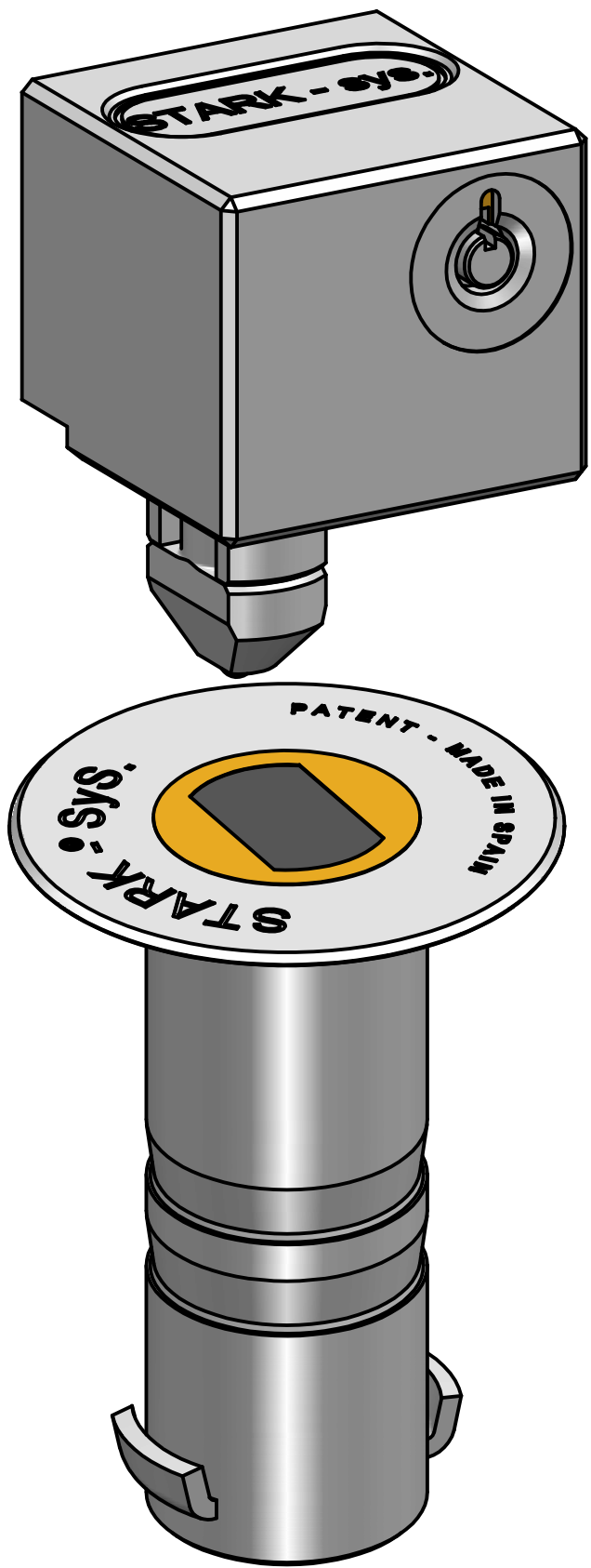


**ATK02\*\***



**ATG02\*\***



## **ATK02**

### **LOCKING DEVICE FOR ROLLING DOORS AND SIMILARS**

Compact and solid designed locking device, formed by a head top, where a swing «T» shaped rotary latch has been placed. It functions by a high-security cylinder with drilling protection on the front side of the device. A remarkable feature of its security is the protection of this latch with both purposes of, protecting against saw action and of, preventing efficiently the turning of the element fixed in the tube that has been built in the floor.

The body of the head has been made of solid chromium plated brass, the rotary latch is manufactured of high resistance steel with anti-corrosive electroplating treatment and its protective cover of hardened-steel with zinc electroplating treatment. All the other elements have been made of either stainless steel or with anti-corrosive treatments.

#### **Versions**

**APK02;** Also available with flat-key of points-cylinder.

**ATG02;** Also available with the latch turned 90 degrees and high-security tubular key-cylinder.

**APG02;** Also available with the latch turned 90 degrees and flat-key of points-cylinder.

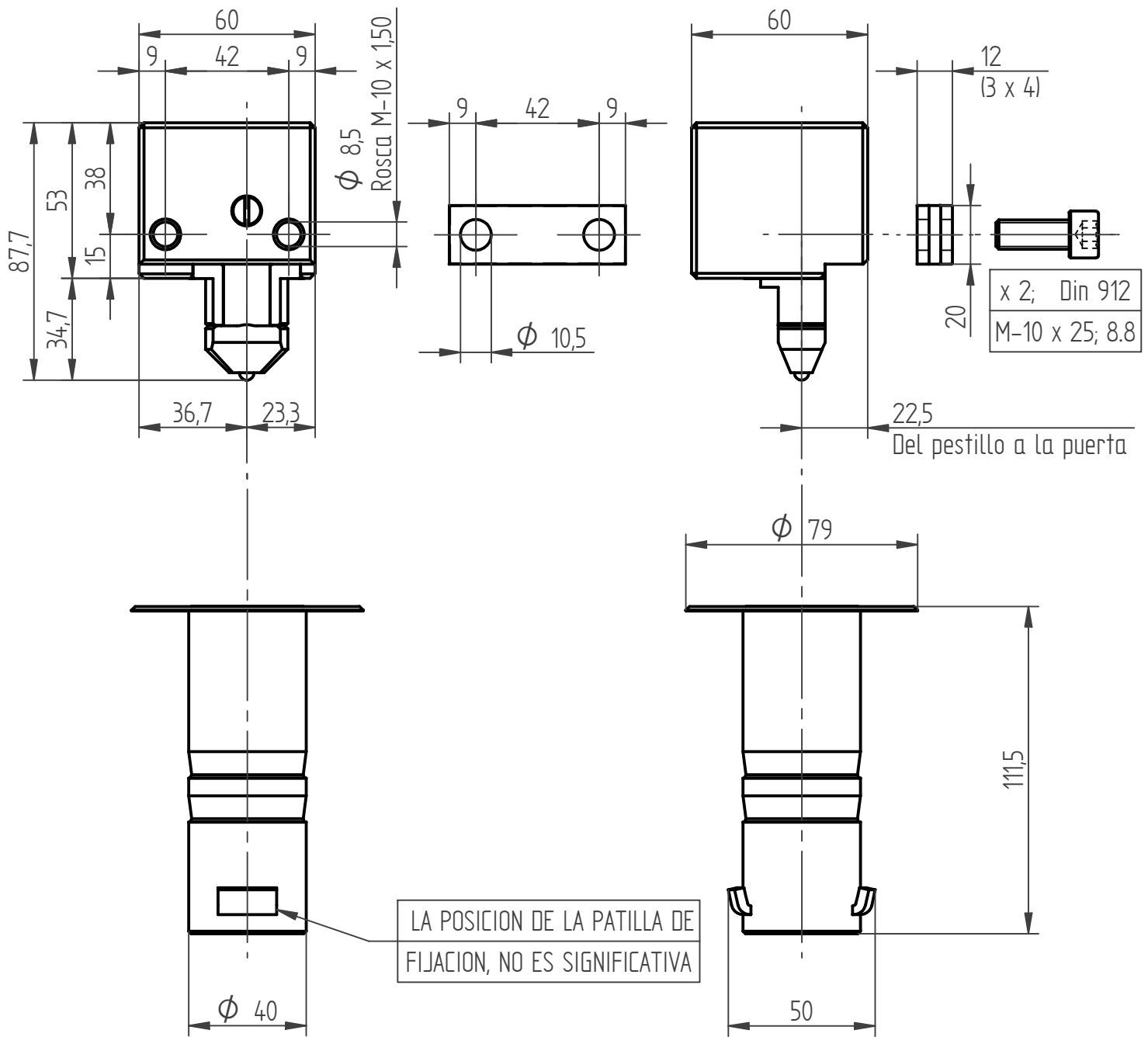
**ITK02;** Also available with stainless-steel latch and high-security tubular-key-cylinder.

**ITG02;** Also available with stainless-steel latch, turned 90 degrees and high-security tubular-key-cylinder.

**IPK02;** Also available with stainless-steel latch flat-key of points-cylinder.

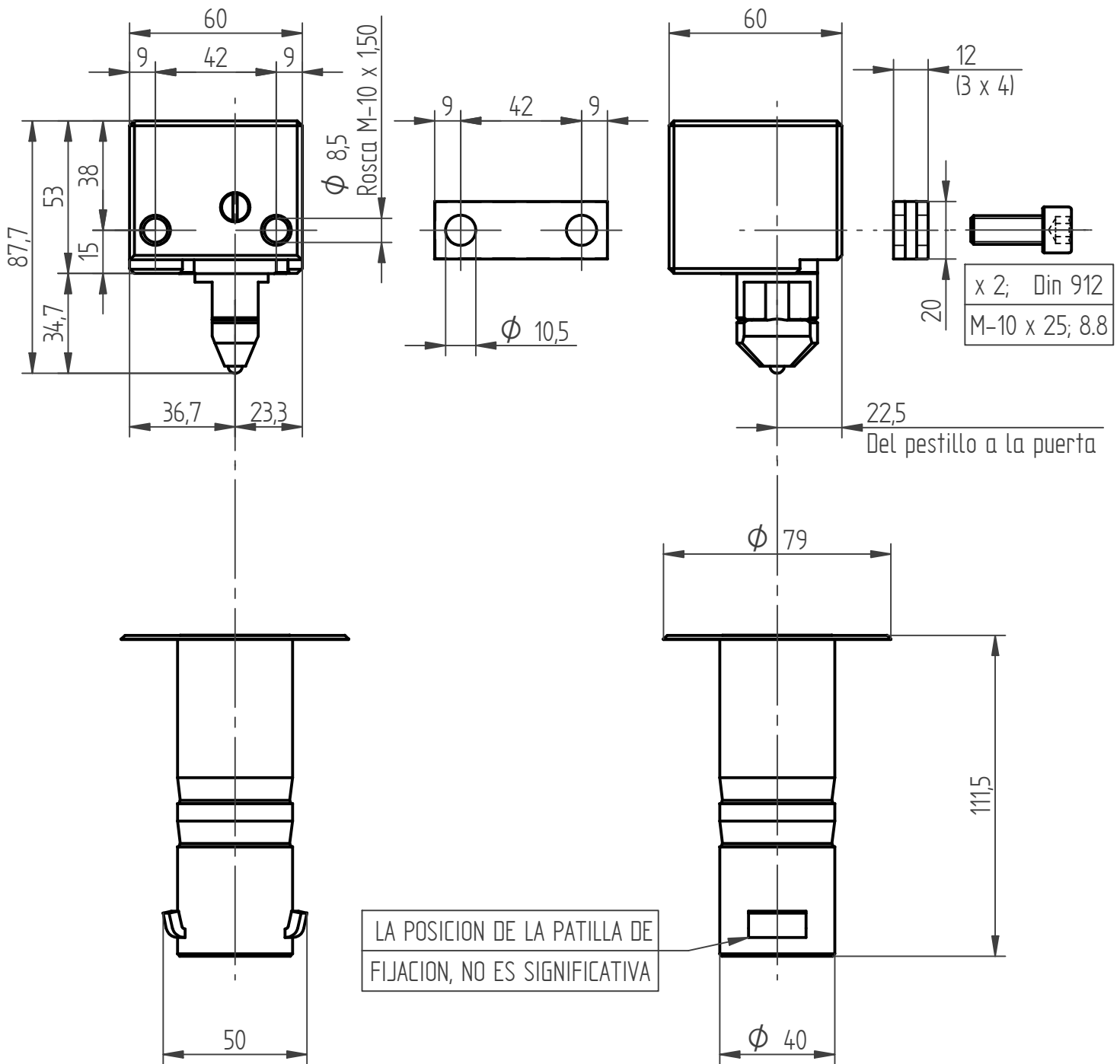
**IPG02;** Also available with stainless-steel latch, turned 90 degrees and flat-key of points cylinder.

**See the data sheets, with installation dimensions.**

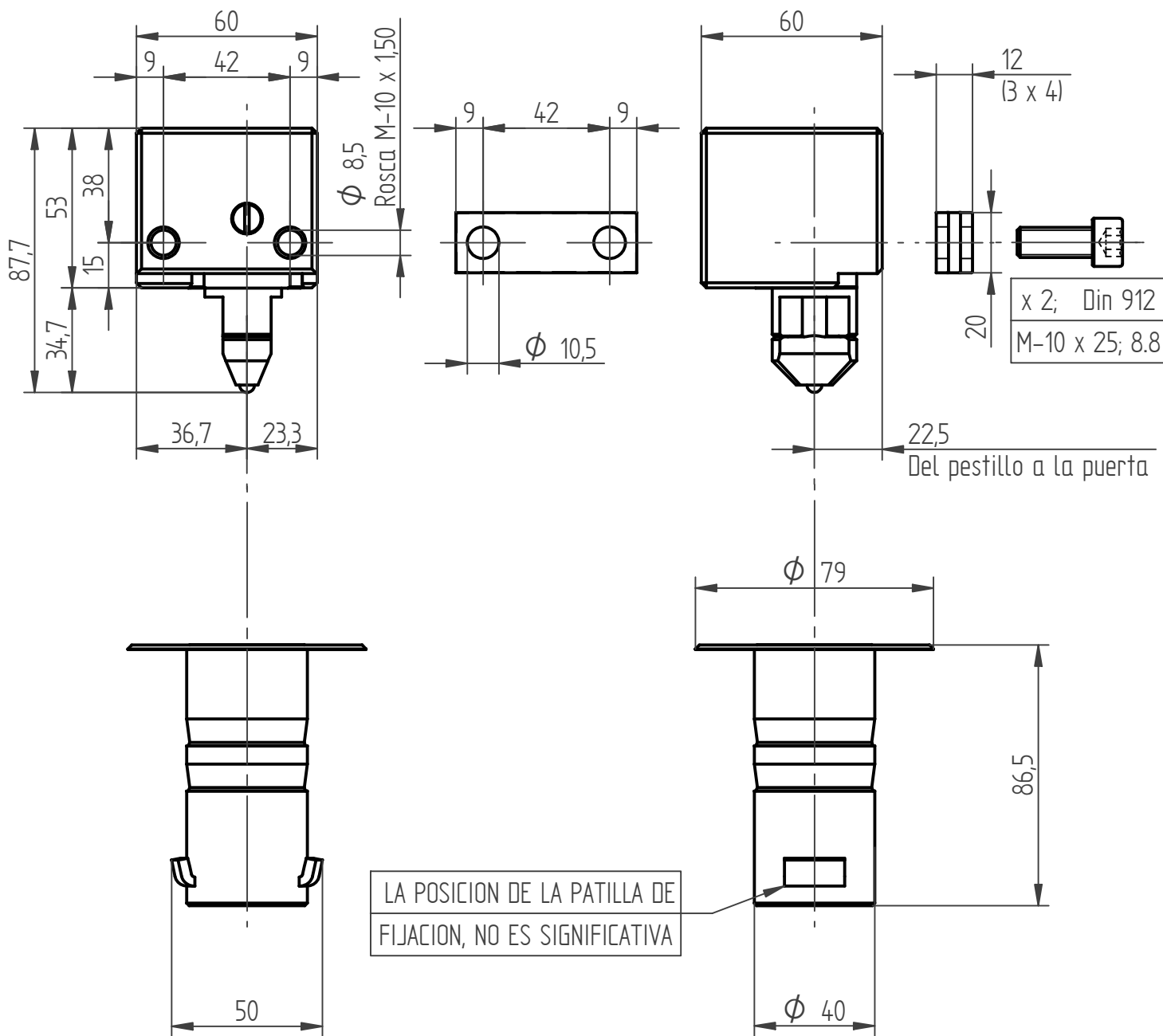


Denominación <b>DIMENSIONES DE INSTALACION ATK/APK02 (Tubo Largo)</b>		Cantidad <b>1</b>	Código Pieza/Plano <b>INSTAL02L/01</b>		<b>MECSYD, Ltd.</b> STARK SyS, Security Systems
Material	Escala	<b>1 - 2</b>	Peso Neto	2,25000 kg.	Tolerancias sin Especificar Individualmente
Dimensiones en Bruto	Trat. Termico		De Longitud		$\pm 0,10$ m/m
Peso en Bruto	Recubrimiento		De $\phi$	$\pm 0,05$ m/m	Angulos $\pm 0^{\circ}30'$
Conjunto	ATK/APK02	Fecha Primer Diseño	02-01-1.995	Fecha Ultima Modificación	23-09-2.011





Denominación <b>DIMENSIONES DE INSTALACION ATG/PG02 (Tubo Largo)</b>		Cantidad <b>1</b>	Código Pieza/Plano <b>INSTALG2L/01</b>		<b>MECSYD, Ltd.</b> STARK SyS, Security Systems
Material	Escala <b>1 - 2</b>	Peso Neto	2,25000 kg.		Tolerancias sin Especificar Individualmente
Dimensiones en Bruto	Trat. Termico		De Longitud $\pm 0,10$ m/m		
Peso en Bruto	Recubrimiento		De $\phi$	$\pm 0,05$ m/m	Angulos $\pm 0^{\circ}30'$
Conjunto	ATG/PG02 (Girado)	Fecha Primer Diseño	02-01-1.995	Fecha Ultima Modificación	23-09-2.011



Denominación <b>DIMENSIONES DE INSTALACION ATG/APG02 (Tubo Corto)</b>		Cantidad <b>1</b>	Código Pieza/Plano <b>INSTALG2C/01</b>		<b>MECSYD, Ltd.</b> STARK SyS, Security Systems
Material	Escala <b>1 - 2</b>	Peso Neto	2,15500 kg.	Tolerancias sin Especificar Individualmente	
Dimensiones en Bruto	Trat. Termico	De Longitud		$\pm 0,10$ m/m	
Peso en Bruto	Recubrimiento	De $\phi$	$\pm 0,05$ m/m	Angulos $\pm 0^{\circ}30'$	
Conjunto ATG/APG02 (Girado)	Fecha Primer Diseño	02-01-1.995	Fecha Ultima Modificación	23-09-2.011	